



INSPIRATION
ENERGY CORP.

CSE: ISP

CANADIAN CRITICAL MINERAL EXPLORATION

MAY 2024 INVESTOR PRESENTATION

Disclaimer

This presentation is strictly confidential and any disclosure, use, copying and circulation of this presentation is prohibited without the consent of Inspiration Energy Corp. ("The Company").

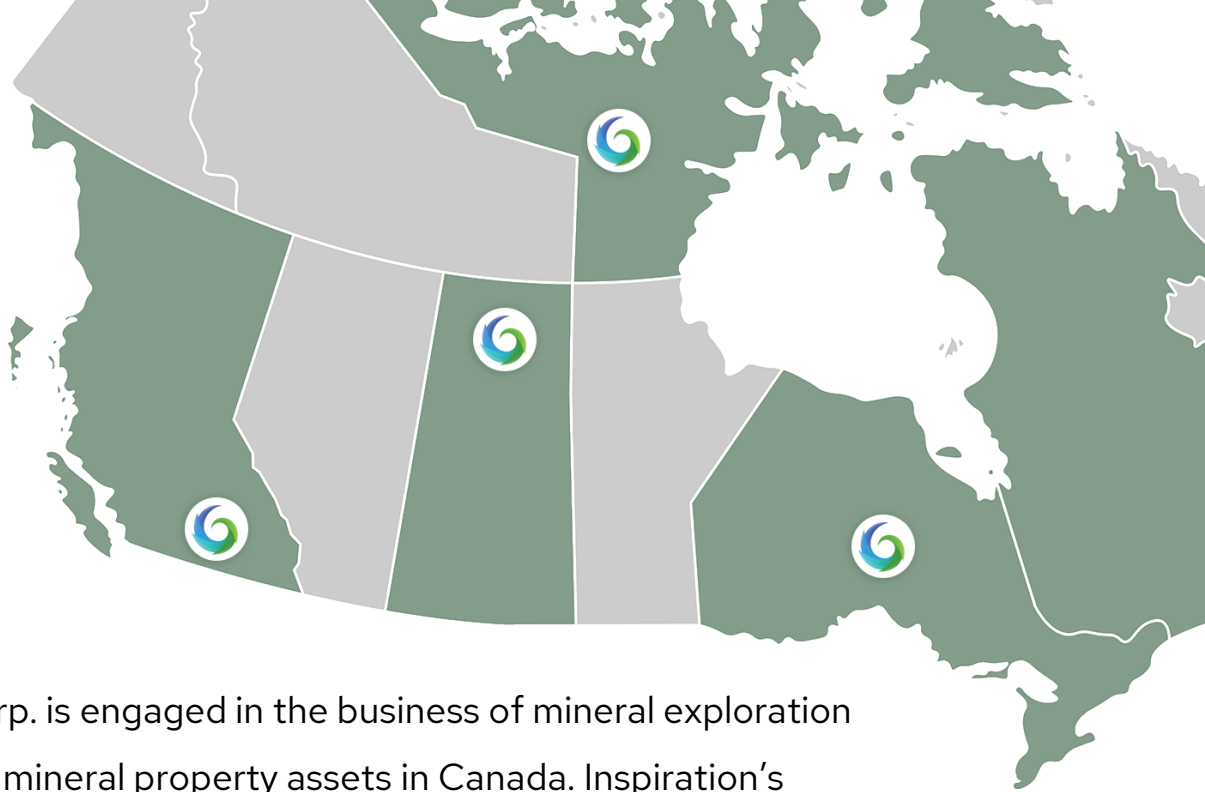
The information contained in this presentation does not constitute or form part of, and should not be construed as, an offer or invitation to subscribe for or purchase the securities discussed herein in any jurisdiction. Neither this presentation nor any part of it shall form the basis of, or be relied upon in connection with any offer, or act as an inducement to enter into any contract or commitment whatsoever. No representation or warranty is given, express or implied, as to the accuracy of the information contained in this presentation.

This presentation contains certain forward-looking statements relating to the business, financial performance and results of the Company and/or the industry in which it operates. Forward-looking statements concern future circumstances and results and other statements that are not historical facts. The forward-looking statements, contained in this presentation, including assumptions, opinions and views of the Company or cited from third party sources are solely opinions and forecasts which are uncertain and subject to risks. A multitude of factors can cause actual events to differ significantly from any anticipated development. Neither the Company nor any such person's, officers or employees guarantee that the assumptions underlying such forward-looking statements are free from errors and omissions nor do any of them accept any responsibility for the future accuracy of the opinions expressed in this presentation or the actual occurrence of the forecasted developments.

The information contained herein has been prepared to assist the recipients in making their own evaluation on the Company and does not purport to contain all information that they may desire. In all cases, the recipients should conduct their own investigation and analysis of the Company, its business, prospects, results of operations and financial condition as well as any other information the recipients may deem relevant.

The Company does not make any representation or warranty, express or implied, as to the accuracy or completeness of this presentation or of the information contained herein and shall have no liability for the information contained in, or any omissions from, this presentation, nor for any of the written, electronic or oral communications transmitted to the recipients (including without limitation its directors, employees, representatives and advisors).

Neither the receipt of this presentation by any recipients, nor any information contained herein or supplied herewith or subsequently communicated in written, electronic or oral form to any person in connection with the contemplated issue of shares in the Company constitutes, or shall be relied upon as constituting, the giving of investment advice to any such person. Each person should make their own independent assessment of the merits of investing in the Company and should consult their own professional advisors. By receiving this presentation, you acknowledge and agree that you will be solely responsible for your own assessment of the market and the market position of the Company and that you will conduct your own analysis and are solely responsible for forming your own opinion of the potential future performance of the Company's business.



Inspiration Energy Corp. is engaged in the business of mineral exploration and the acquisition of mineral property assets in Canada. Inspiration's most recent acquisitions are the Plateau, Ledge & Bentley projects located within the Athabasca Basin in Saskatchewan, Canada.

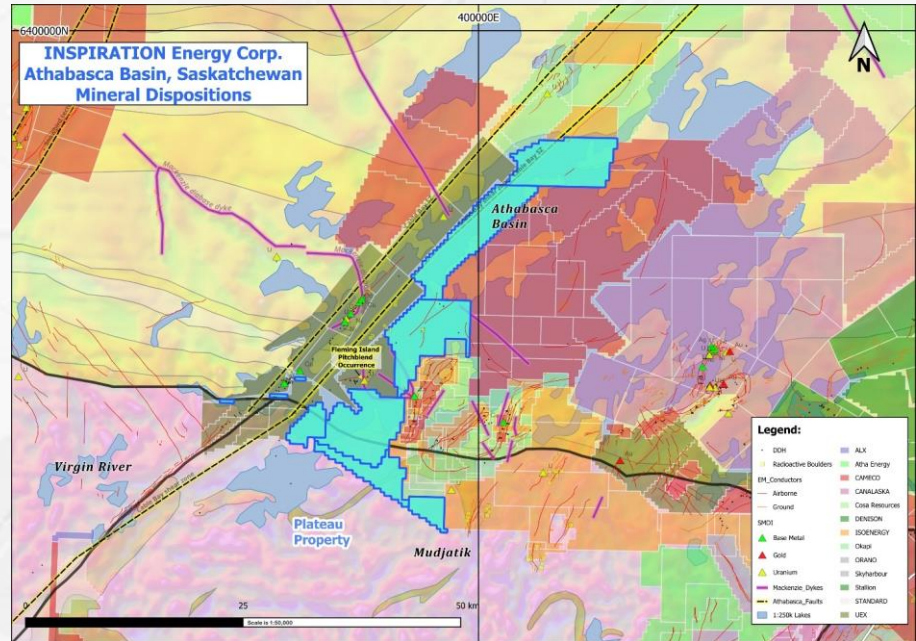
ATHABASCA PORTFOLIO

URANIUM – ATHABASCA BASIN, SASKATCHEWAN, CANADA



ATHABASCA PORTFOLIO Plateau Project

The Plateau Project, located in the southeast Athabasca Basin, consists of 9 mineral dispositions totaling 27,252 ha (27km²). The Athabasca Basin unconformity-contact crosscuts the southern mineral dispositions of the property, and the sandstone extends northwards to a maximum thickness of 800 metres. The basement rock underlying the Plateau Project consists of mainly Archean felsic gneisses with lesser Archean and Paleoproterozoic supracrustal rocks.

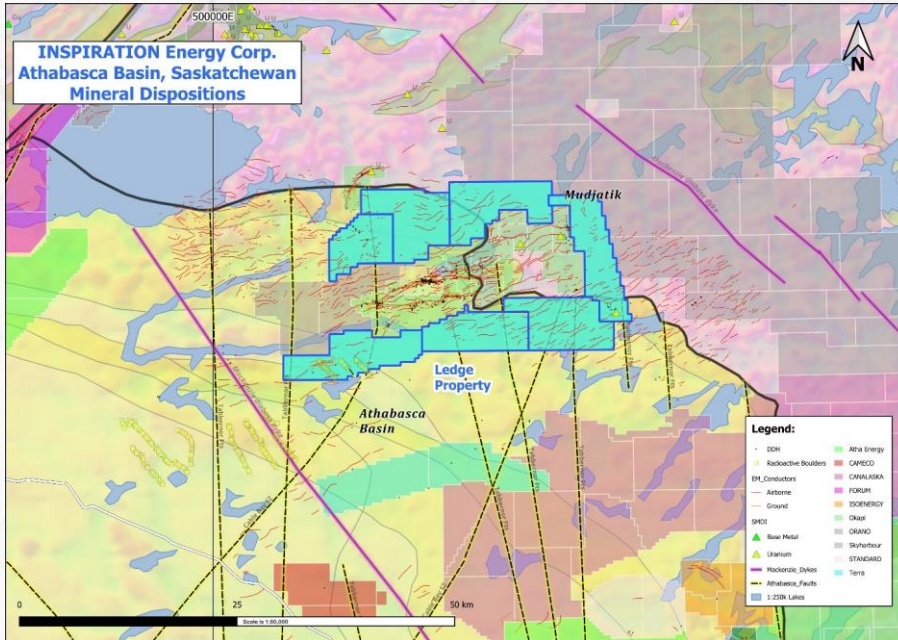


PLATEAU PROJECT Highlights

- Targeting basement-hosted and unconformity-associated Uranium mineralization.
- Property Structural Fabric: Curvilinear NE-trending belt dominated by dome-and-basin-style interference-folding of the Mudjatik Domain overprinted by NE-linear Cable Bay Shear Zone.
- Major Structures include Cable Bay Shear Zone, Tabbernor faults, and Mackenzie diabase dykes.
- Proximity to Known Mineralization: 1 km from Fleming Island Occurrence (3% U₃O₈ outcrop samples). There are multiple Saskatchewan Mineral Deposit Index showings proximal to the property that include Co, Cu, Zn, and Ni.
- Recent Work: Xcite™ helicopter-borne time-domain electromagnetic (HTDEM) system flown over entire property in 2023, which defined 73 linear-kilometres of conductors on the property.
- Xcite™ survey has highlighted coincident magnetic and electromagnetic anomalies within the northwest quadrant of the property that may host northeast trending splay faults of the Cable Bay Shear Zone.

Future Work Recommendations

- I. Complete drillhole and surficial geochemistry compilation work initiated by Atha.
- II. Property-wide airborne gravity survey.
- III. Property-wide ground geochemistry/boulder sampling survey.
- IV. Ground time-domain electromagnetic (TDEM) and ground DC-IP resistivity surveying over the northern dispositions.
- V. Geologic mapping & prospecting over the southern dispositions.



ATHABASCA PORTFOLIO Ledge Project

The Ledge Project, located in the northeast Athabasca Basin, consists of 7 mineral dispositions totalling 38,784ha (38km²). The Athabasca Basin unconformity-contact crosscuts the northern mineral dispositions of the property, and the sandstone extends southwards to a maximum thickness of 200 metres. The basement rocks underlying the Ledge Project consist of mainly Archean felsic gneisses with lesser Archean and Paleoproterozoic supracrustal rocks.

LEDGE PROJECT

Highlights

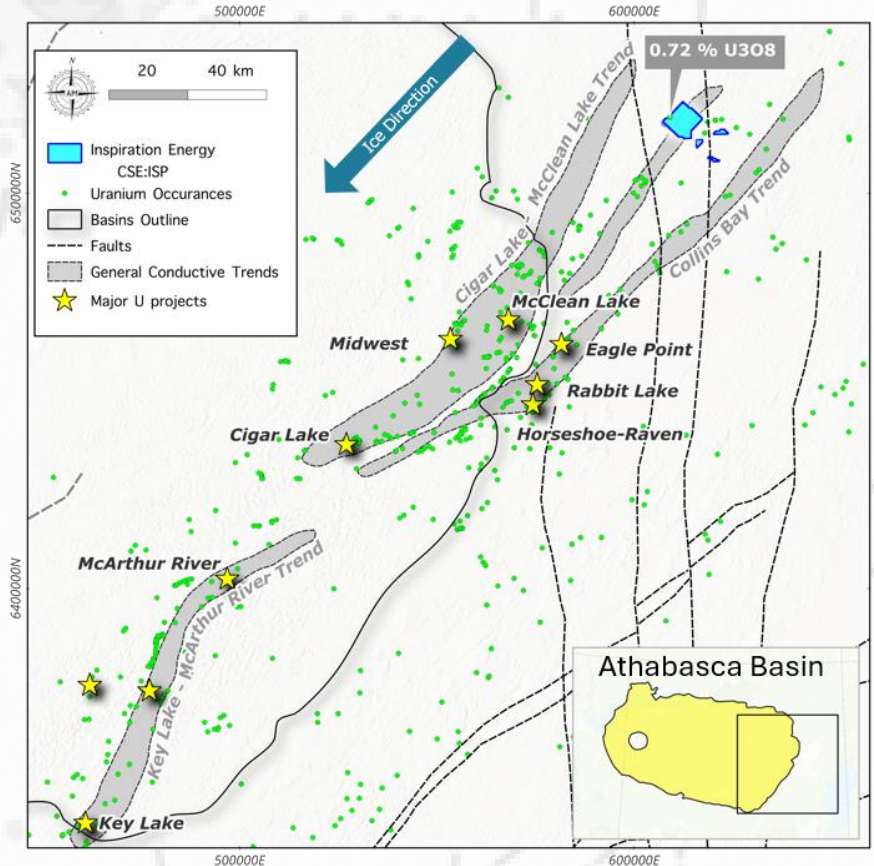
- Targeting basement-hosted and unconformity-associated Uranium mineralization.
- Property Structural Fabric: Curvilinear NE-trending belt dominated by dome-and-basin-style interference-folding typical of the Mudjatik Domain.
- Major Structures include Tabernor faults, Mackenzie diabase dykes, and potential extension of the Cable Bay Shear Zone.
- Numerous drill holes and boulder sampling has been completed on the property with anomalous Uranium and scintillometer values which have been linked to the granitoids.
- Proximity to Known Mineralization: Moosonees Lake Bedrock Uranium Showing on Property (Surficial Boulder Sample at 0.19% U3O8).
- Recent Work: Xcite™ helicopter-borne time-domain electromagnetic (HTDEM) system flown over entire property in 2023, which defined 50 linear-kilometres of conductive lineaments.

Future Work Recommendations

- I. Complete drillhole and surficial geochemistry compilation work initiated by ATHA Energy Corp.
- II. Property-wide airborne gravity survey.
- III. Property-wide geologic mapping, prospecting.
- IV. Property-wide ground geochemistry/boulder survey.

ATHABASCA PORTFOLIO Bentley Project

The Bentley Project is comprised of four mineral licenses encompassing a total land area of ~5,710ha (57km²) and is located 75 kilometers North-East of Cameco's Rabbit Lake mine. The Project sits on a potentially parallel structure to the Collins Bay Conductive trend that hosts the Rabbit Lake, Collins Bay and Eagle Point deposits. This environment has the potential for basement-hosted Uranium mineralization analogous to the Eagle Point model.



BENTLEY PROJECT

History

1969

- Ground EM and magnetic surveys were conducted over areas where airborne EM anomalies had been detected, along with an airborne spectrometer survey (AF 64L-0003)
- Diamond drilling, ground magnetic and EM surveys, and a U-Th ratio comparison were conducted over a portion of the area, but not covering the showing location (AF 64L15-0003)
- The following year, diamond drilling, ground geophysics, and geological mapping were carried out specifically over the showing area (AF 64L-0004), alongside ground evaluation across the entire area (AF 64L15-0004)
- Although positive results were uncovered during this mapping, the area was abandoned in 1971

1977

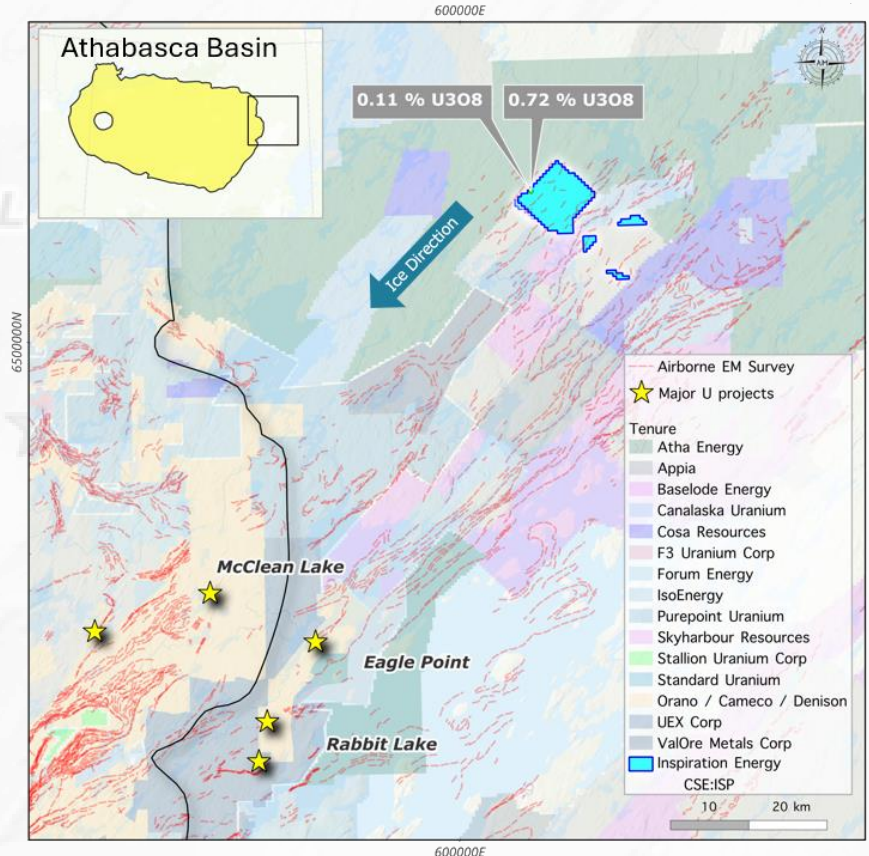
- Taiga Consultants Ltd. obtained Permit No. 1 over the area and submitted an exploration proposal and a regional geological description for the permit (AF 64L10-0016)
- Ownership was then transferred to Energy Reserves Canada Ltd. who conducted an airborne geophysical survey (AF 64L10-0017) and undertook regional and detailed lake sediment sampling, geological and glacial mapping, prospecting, and anomaly checks (AF 64L10-0018)
- Focus shifted towards a ground EM survey and follow-up prospecting of anomalous areas (AF 64L10-0019)

1980

- Geological reconnaissance and mapping conducted in the broader area during the summer of 1980 by B.P. Scott (Scott, 1980), identified the area near outcrops categorized as granite and migmatite of the Apebian Wollaston Domain
- Isolated outcrops near the exploration site predominantly consist of granite with less than 50% inclusions of felsic gneiss or granodiorite gneiss

BENTLEY PROJECT Exploration Targets

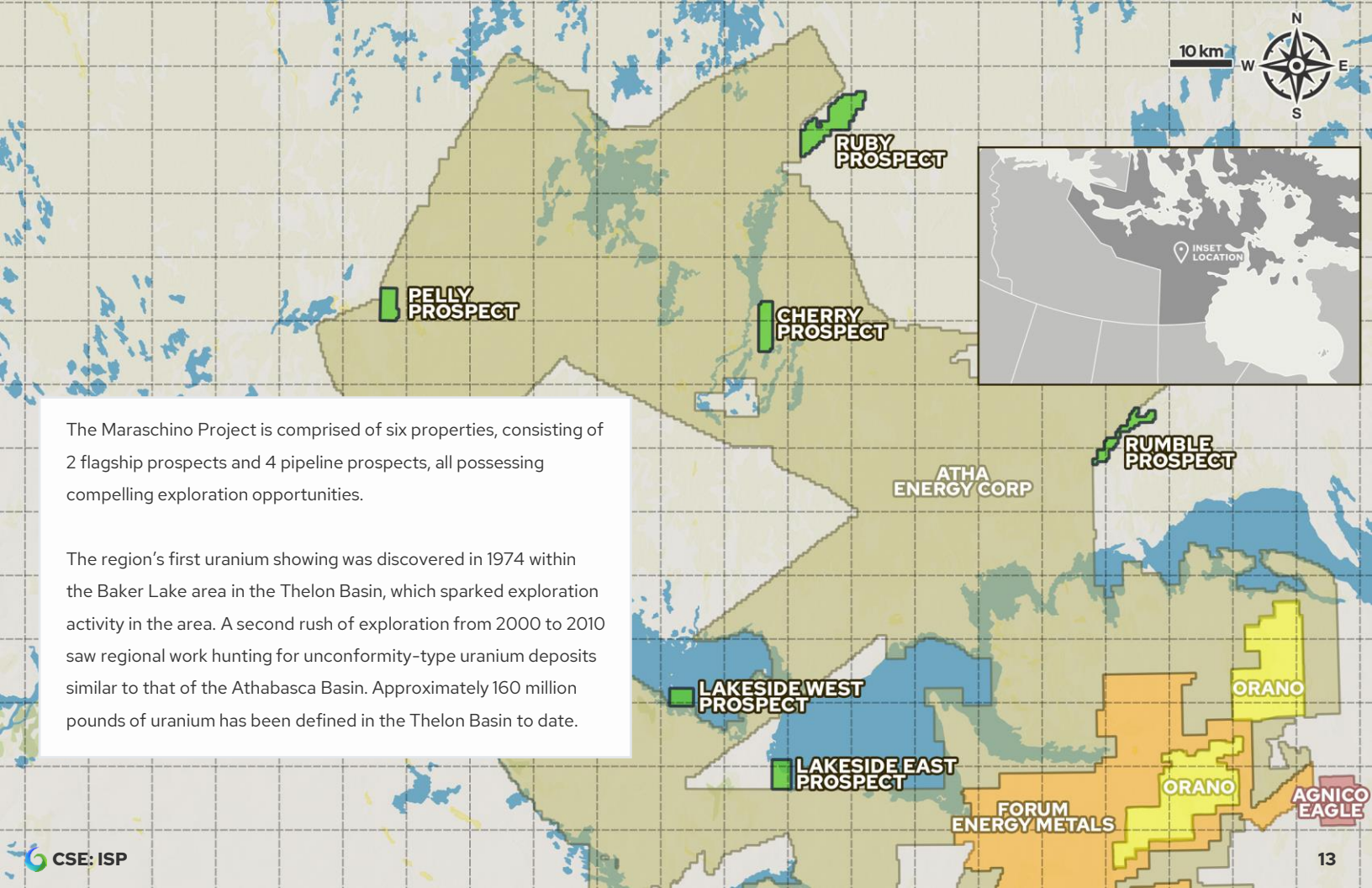
The most notable uranium showing on the property is located at the northern tip of the eastern shoreline of an unnamed small lake, ~15.3km to the east-southeast of Bentley Lake's eastern shore. Mineralization is found within a boulder of migmatitic biotite gneiss, corresponding to radiometric anomaly F-4, with scintillometer readings of 3900 counts per second (cps). Further analysis of the boulder revealed a U3O8 value of 0.11% (0.09% U) and 0.03% ThO2. Another boulder proximal to the first corresponds to radiometric anomaly F-3 and comprises quartzose biotite gneiss, yielding scintillometer readings of 1500 cps. Assay results returned 0.72% U3O8 (0.69% U) and 1.98% ThO2.



MARASCHINO PROJECT

URANIUM – THELON BASIN, NUNAVUT, CANADA

MARASCHINO



The Maraschino Project is comprised of six properties, consisting of 2 flagship prospects and 4 pipeline prospects, all possessing compelling exploration opportunities.

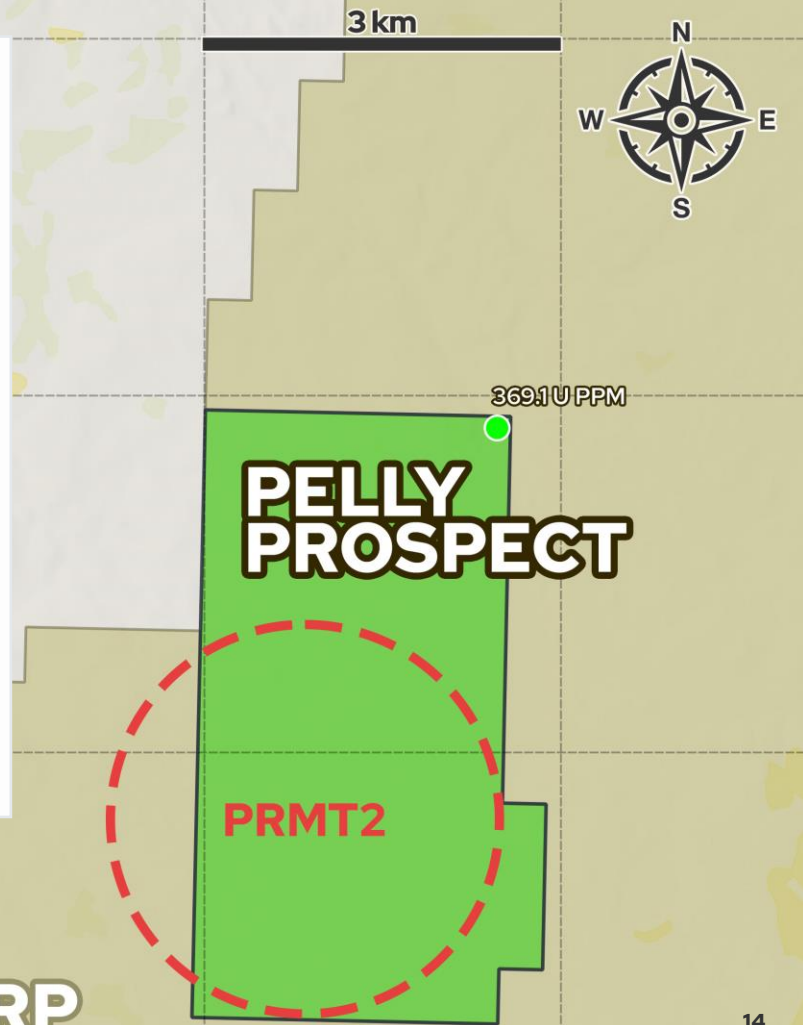
The region's first uranium showing was discovered in 1974 within the Baker Lake area in the Thelon Basin, which sparked exploration activity in the area. A second rush of exploration from 2000 to 2010 saw regional work hunting for unconformity-type uranium deposits similar to that of the Athabasca Basin. Approximately 160 million pounds of uranium has been defined in the Thelon Basin to date.

FLAGSHIP A

Pelly Prospect

The Pelly Prospect comprises 1,366 ha and is located on the Thelon Basin unconformity 145km WNW of Baker Lake. Historic work identified lake sediment geochemical anomalies and uranium showings on the property, with follow-up work identifying VLF basement conductors south of the uranium showings. Limited prospecting was completed following the results of a historic airborne survey, however, historic sampling returned a highlight of 369.1 ppm U. The property encompasses the PRMT2 exploration target.

The PRMT2 target lies 225 km from Baker Lake and is an extension of the Amer / McDonald fault system; a contact between the Rae Domain granites and the Thelon Formation of the Dubawnt Supergroup sediments. Clusters of high raw uranium counts (radiometric) are associated with the intersections of interpreted NW-SE and NE-SW structures. An ENE-trending fault contact between the locally outcropping granite and quartzites boulder conglomerate (Whart Gp, Thelon Fm) features boulders that are strongly radioactive altered, bleached and hematized.

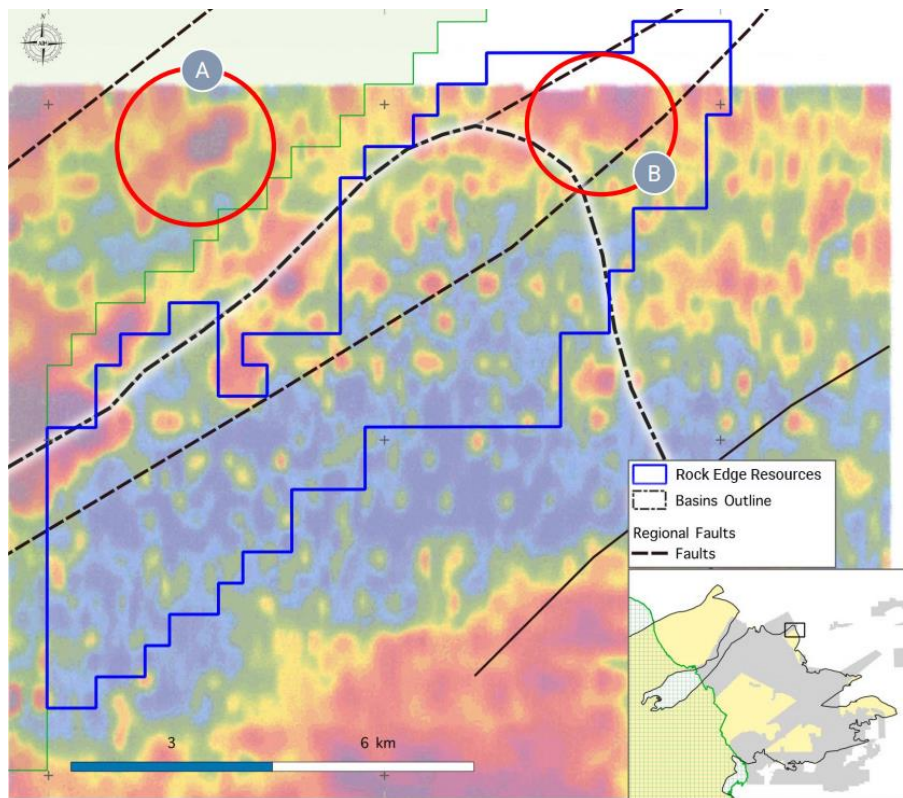


ATHA
ENERGY CORP

FLAGSHIP B

Ruby Prospect

The Ruby Prospect comprises 4,057 ha and is located 170km NW of Baker Lake. The prospect covers the northern edge of the Thelon Basin and is underlain by the Archean Amer group consisting of metapelites. A historic airborne magnetic survey identified a single unusual low resistivity response at the northern edge of the prospect. This response has a NE strike associated with Amer sediment cover but is a well-defined local response that could be alteration within the sediments.



Pipeline Prospects

The 4 pipeline projects consist of the Lakeside West and East, the Cherry, and the Rumble Prospects. All four have either radiometric anomalies, interpreted basement faults or geologically mapped unconformity horizons. Property highlights include:

Lakeside West

- **Intersecting faults**

Lakeside East

- **Possible reactivated fault**
- **Strategic position**

Cherry

- **Intersecting faults**
- **Surrounded by Atha Energy Corp.**

Rumble

- **Unconformity**
- **Intersecting faults**

Management & Directors

Charles Desjardins **CEO, PRESIDENT & DIRECTOR**

Mr. Desjardins brings more than 30 years of public company experience in the areas of finance and public company management. He is President and CEO of Tandem Capital Group Inc. which was active in the investor relations field during the mid 1980s. Mr. Desjardins was also past president of numerous public mineral exploration and technology companies which traded on the TSX Venture exchange.

James H. Place **DIRECTOR**

Mr. Place is a professional geoscientist (registered in BC) with more than 30 years of experience in the aggregate, heavy construction, and engineering fields. He has worked on all phases of aggregate projects from exploration and permitting through to testing, development, marketing, production and reclamation throughout northern and coastal British Columbia. Mr. Place has held positions with government, engineering companies, and environmental consulting companies.

Lorne McCarthy **DIRECTOR**

Mr. McCarthy has been involved in the Junior Resource Sector for the past 40 years and has served on a number of Public Companies as a Director or Advisory Capacity. He has also been a Realtor in the Vancouver / Lower Mainland for over 30 years and served on the Government Relations Committee for the Greater Vancouver Real Estate Board and made many good relationships with Members of Parliament with both the Provincial Government in British Columbia and the Federal Government in Ottawa.

Capitalization

Shares Outstanding **48,113,645**

Options **2,680,000**

Warrants **25,747,416**

Fully Diluted 76,541,061

Inspiration Energy Corp.

1240-789 W Pender St.

Vancouver, BC, V6C 1H2

✉ info@inspiration.energy

inspiration.energy

Connect With Us



[@inspirationenergy](https://www.instagram.com/inspirationenergy)



INSPIRATION

ENERGY CORP.

CSE: ISP